

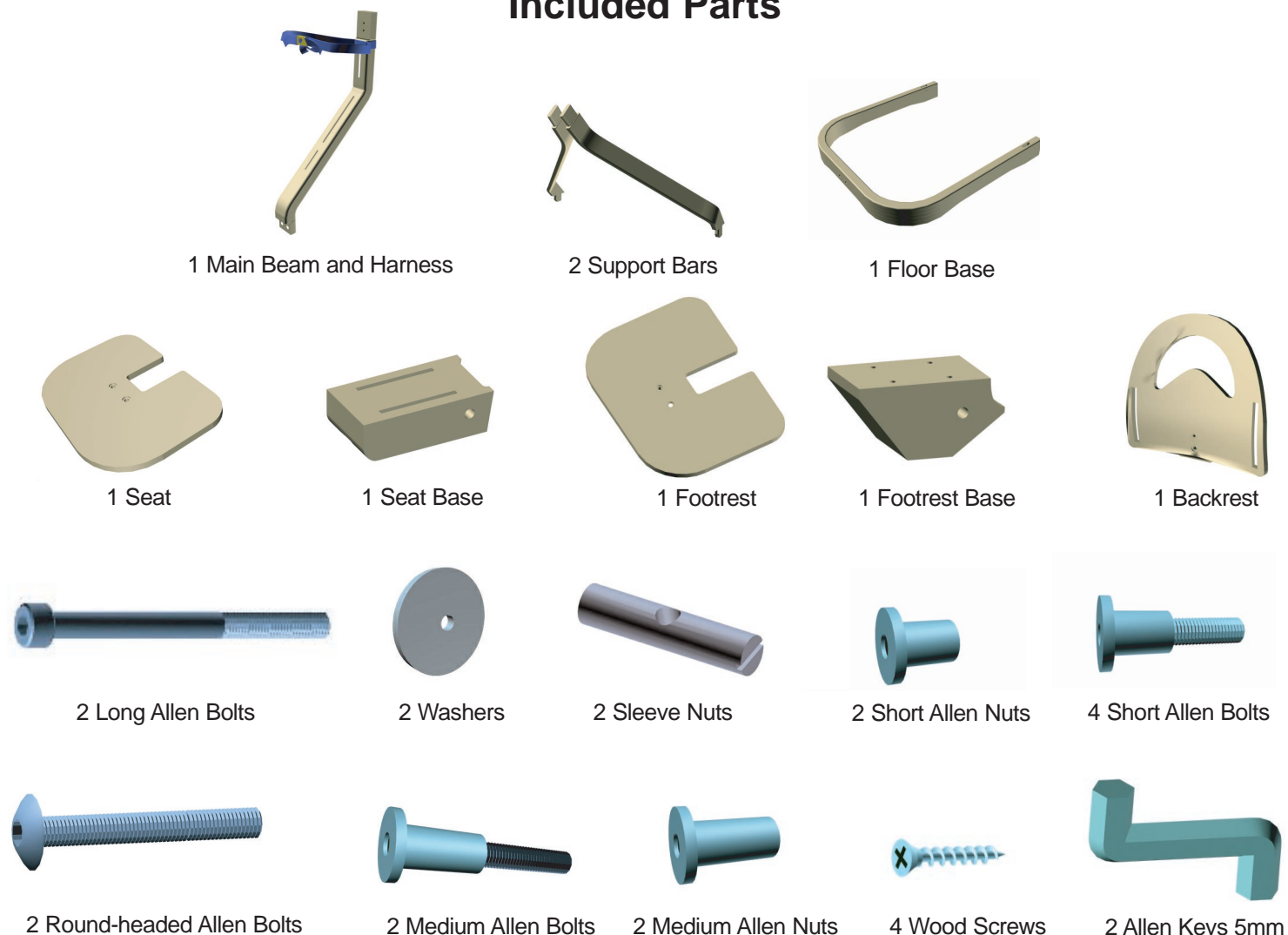
Svan® Chair Assembly Instructions

⚠ WARNING

IMPORTANT! RETAIN THESE INSTRUCTIONS FOR FUTURE REFERENCE!

- ⚠ Prevent serious injury or death from falls or sliding out.
- ⚠ Always secure children under three (3) years old in the restraint system. The tray is not designed to hold the child in the chair.
- ⚠ Always keep child in view while in high chair. Never leave child unattended in the high chair.
- ⚠ It is recommended that the high chair be used only by children who are capable of sitting upright unassisted.
- ⚠ Read this owner's manual before using this product. Failure to follow all warnings and instructions may result in serious injury or death.
 - Do not use the chair if any part appears damaged, broken or missing.
 - Do not use the chair unless all components are correctly fitted and adjusted.
 - Be aware of the risk of open fire and other sources of strong heat, such as electric heaters, in the vicinity of the chair.
 - Do not mount the footrest in its lower groove / outer setting position, because the chair may tip forward. (See Footrest Adjustment Warning below for details.)
 - Clean the chair with a damp cloth or cleaner that is suitable for wooden furniture.
 - Do not remove the tape that secures the Harness to the Main Beam until the chair is fully assembled. When assembled, the harness loop should be attached to the Main Beam between the Backrest and Seat Base.
 - When attaching tray for child use, be careful of children's fingers. It is recommended that you attach the tray before seating the child.
 - Do not carry the chair with child seated or by the tray.

Included Parts



Adult assembly required. Approximately 30 minutes to assembly. All parts are included. You will need a Phillips-head screwdriver. Make sure no parts are left over, except the Allen Keys. All parts are required for proper assembly. Retain instructions and Allen Keys for future adjustments.

Footrest Adjustment Warning



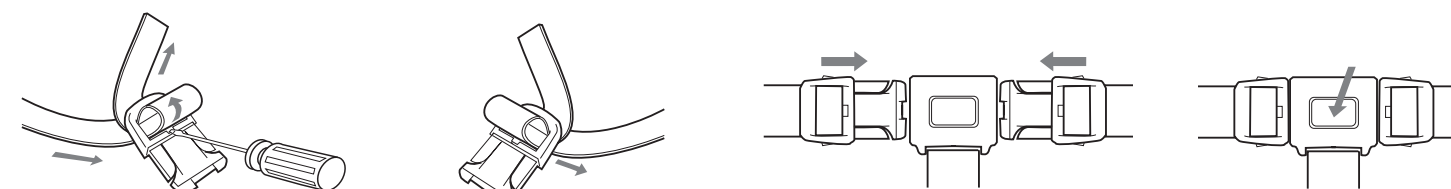
When placing the Footrest in the lower groove of the Main Beam, DO NOT use the outer set of bolt holes in the Footrest Base. This causes the Footrest to extend too far beyond the base of the chair, resulting in a tipping hazard.

FAILURE TO FOLLOW THESE INSTRUCTIONS MAY CAUSE A TIPPING HAZARD.

⚠ WARNING

Harness

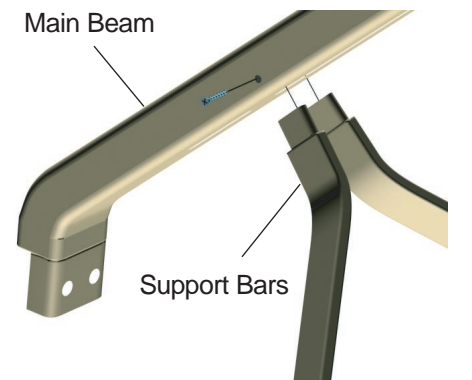
Your chair comes with a 3-point child harness. Use this at all times to secure your child under 3-years of age. When a harness is necessary, Svan recommends that a safety guard is also used for added safety.



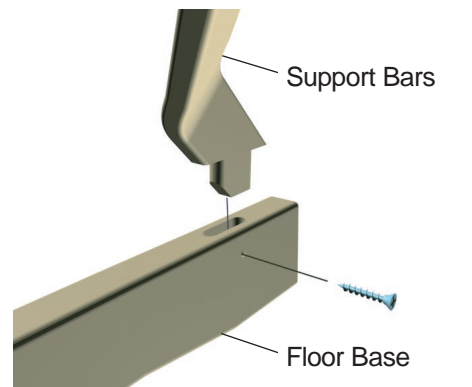
1. To adjust straps, open clip lock with small screwdriver or pen.
 2. Pull inner strap to lock clip.
 3. To secure child, insert strap clips into buckle.
 4. To remove child, simply push button on buckle to release strap clips.
- When the chair is no longer in use as a high chair, the harness may be removed by detaching the Backrest and sliding the harness loop up off the Main Beam. Re-install and use the harness whenever a child under the age of 3-years-old is using the chair.

Svan® Chair Assembly Instructions

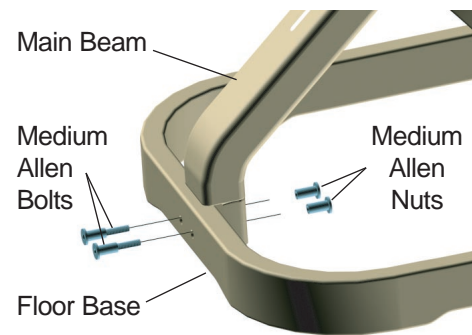
NOTE: These are basic assembly instructions. Please see the adjustment diagrams to the right for guidance on how to properly adjust the chair to fit your child.



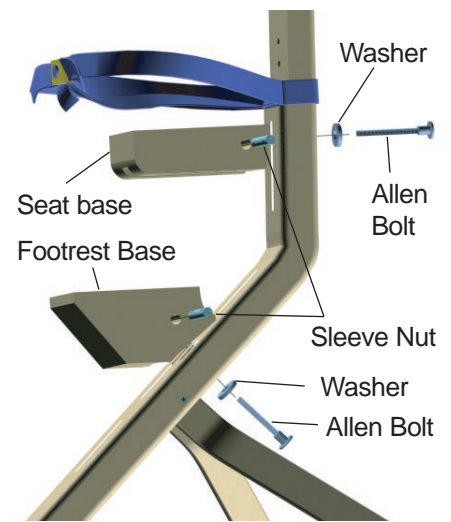
1. Insert the flat end of the two (2) Support Bars into the Main Beam. (Wood screws will be inserted last.)



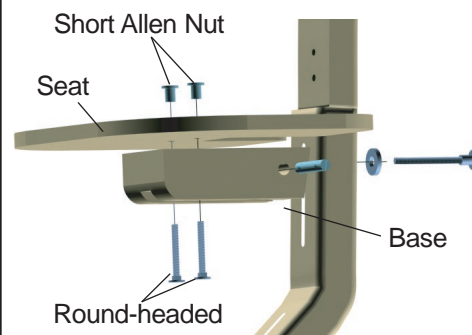
2. Insert the other end of the two (2) Support Bars into the Floor Base. (Wood screws will be inserted last.)



3. Align the Main Beam to connect with the Floor Base. Insert two (2) Medium Allen Bolts from the outside of the Main Beam. From the inside of the Main Beam, connect the Medium Allen Nuts to the Medium Allen Bolts that were installed through the outside of the Beam.

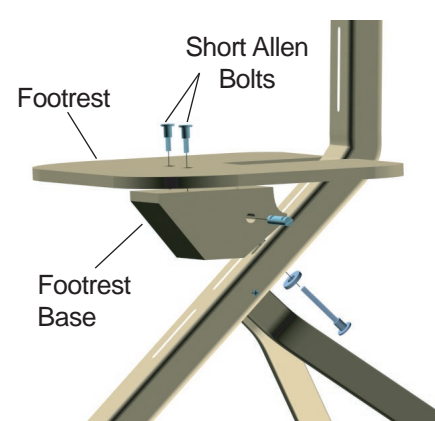


4. Insert a Sleeve Nut into the side opening on the Seat Base. Align the Seat Base to the Main Beam so the rounded edge and bolt holes face down. Attach Seat Base below the harness loop and secure with a Washer and Allen Bolt. Repeat this process for attaching the Footrest Base.



5. Insert two (2) Round-headed Allen Bolts up through the Seat Base grooves from the underside of the Seat Base. Place the Seat onto the Seat Base with the larger bolt openings facing up and so that the ends of the Round-headed Allen Bolts appear in the holes. Attach two (2) Short Allen Nuts and secure.

2 Year Manufacturer's Warranty
Svan AB warrants its products to be free from defects in workmanship and material under normal household use in accordance with the assembling instructions for two years following date of purchase. Svan will, at its discretion, replace or repair any item requiring service. This warranty shall not apply to damages arising from neglect, accidental damage, or commercial use of product. This is a limited warranty. Liability for consequential property damage is expressly excluded. Proof of purchase is required. To make a claim under this warranty, please contact Scandinavian Child at the phone number or address to the right. Please have the Model and Prod. No. ready. They can be found on the side of the footrest base.

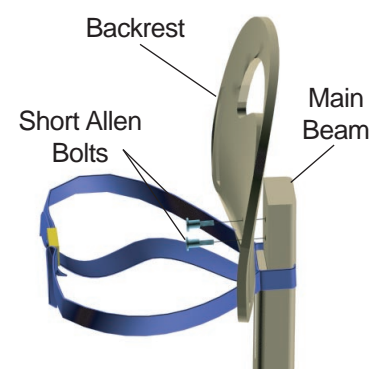


6. Place the Footrest onto the Footrest Base so that the larger bolt openings face up. Insert and secure two (2) Short Allen Bolts in the holes on top of the Footrest. There are two settings for attaching the Footrest to the Footrest Base. The Footrest Base should be on the outer most set for a smaller child, then moved in when in the lower positions.

- Use the outermost set of bolt holes if you are going to attach the base in the middle groove in the Main Beam (See fig. 6.).
- Use the innermost set of bolt holes if you are going to attach the base in the lower groove in the Main Beam (See fig. 6.).

⚠ WARNING

NEVER leave the footrest in the outer-most set of holes if you are going to attach the base in the lower groove! This causes a risk of tipping forward if stood on by a child.



7. Align the Backrest with the Main Beam so the harness loop rests between the Seat Base and the Backrest. Insert and secure the two (2) Short Allen Bolts in the holes on front side of the Backrest.

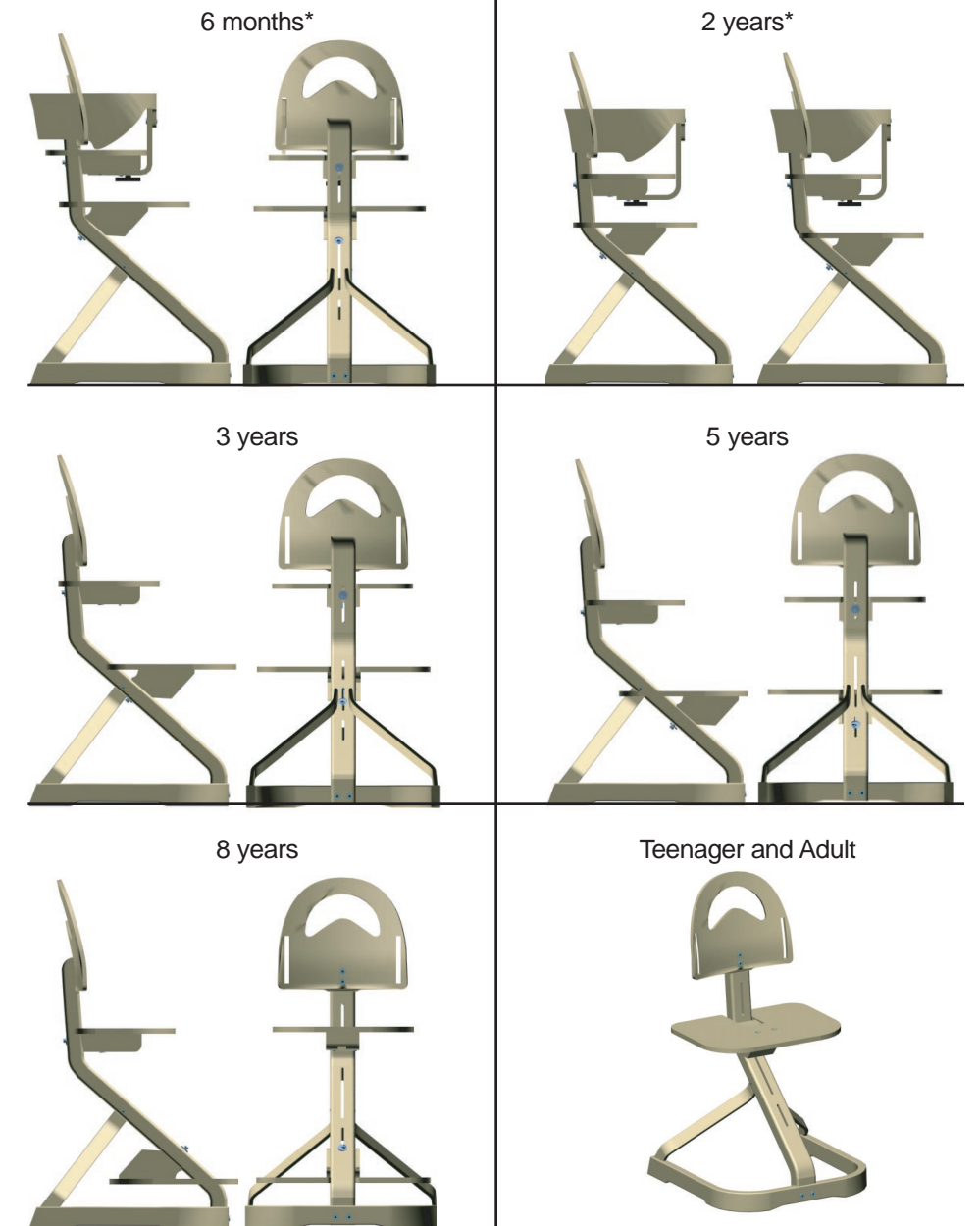


8. Secure the Support Bars with four (4) Wood Screws. One on each side of the Main Beam and two on the inside of the Floor Base.

9. Adjust the chair to suit the individual needs of the child (refer to the adjustment diagrams to the right for guidance). Check all hardware periodically and tighten as needed, particularly after transporting the chair.

The Svan Chair is adjustable for all ages!

The following are adjustment examples, actual adjustments will depend on your child's needs.



*Shown here with the Safety Guard, available in the Infant Kit.

Move the footrest up to the top of the middle groove in the Main Beam to make it a standard chair.

Keep these instructions and allen keys. You will need them to adjust the chair as your child grows.

Svan is distributed in North America by:
Scandinavian Child, Inc.
Raleigh, NC
www.ScandinavianChild.com
1-866-Svan-Baby (782-6222)
Model: US1001 and USS001
Designed in Sweden. Manufactured in Latvia.



QUESTIONS? Call 1-866-Svan-Baby (782-6222)